



# COUNTY OF YOLO

ELECTIONS OFFICE  
625 COURT STREET, ROOM B-05, WOODLAND CA 95695  
(P) 530.666.8133 (F) 530.666.8123

**JESSE SALINAS**  
REGISTRAR OF VOTERS



## Voter's Choice Act Public Hearing for Consideration of the Yolo County Elections Draft Election Administration Plan January 26, 2022 1:00 p.m

### Teleconference Options to join the Zoom Meeting:

#### Join by Computer or Smart Phone:

<https://yolocounty.zoom.us/j/84717904616>

You do not need to have a "Zoom account" to join.

#### Join by one-tap Mobile Phone call:

+14086380968,,84717904616# US (San Jose)

+16699006833,,84717904616# US (San Jose)

Meeting ID: 847 1790 4616

#### Join by Phone:

##### Dial by location

+1 408 638 0968 US (San Jose)

+1 669 900 6833 US (San Jose)

+1 253 215 8782 US (Tacoma)

+1 346 248 7799 US (Houston)

+1 312 626 6799 US (Chicago)

+1 646 876 9923 US (New York)

+1 301 715 8592 US (Washington DC)

Meeting ID: 847 1790 4616

For more information about conducting meetings virtually, rather than in person, please see attached Yolo County COVID-19 Update Week of January 10, 2022.

It is anticipated that it will take 90 minutes to go through the agenda and all public comments.

The Election Administration Plan (EAP) under consideration is available on the Yolo County Elections website and will be posted in the "chat" section as a link during the Zoom meeting.

Link to website: <https://www.yoloelections.org/voters-choice-act/draft-election-administration-plan-1>.

AGENDA ON NEXT PAGE



# COUNTY OF YOLO

ELECTIONS OFFICE  
625 COURT STREET, ROOM B-05, WOODLAND CA 95695  
(P) 530.666.8133 (F) 530.666.8123

**JESSE SALINAS**  
REGISTRAR OF VOTERS



## Voter's Choice Act Public Hearing for Consideration of the Yolo County Elections Draft Election Administration Plan January 26, 2022 1:00 p.m.

Please see the previous page for information on joining this Public Hearing by teleconference.

### Agenda

1. Introductions
  - a. Yolo County Elections Office Staff
  - b. Meeting Structure
2. Goals of the Meeting
3. What is the Voter's Choice Act (VCA) and the Yolo County Election Administration Plan (EAP)
4. Walk through the EAP
  - a. Overview of In-person Voting Options and Vote-by-Mail
  - b. Voter Education and Outreach Plan
  - c. Relevant Appendices
5. Open Forum/Public Comment/Reading of Written Public Comment
6. Closure



# Yolo County Weekly COVID-19 Update

## Week of January 10, 2021

### Policy Updates

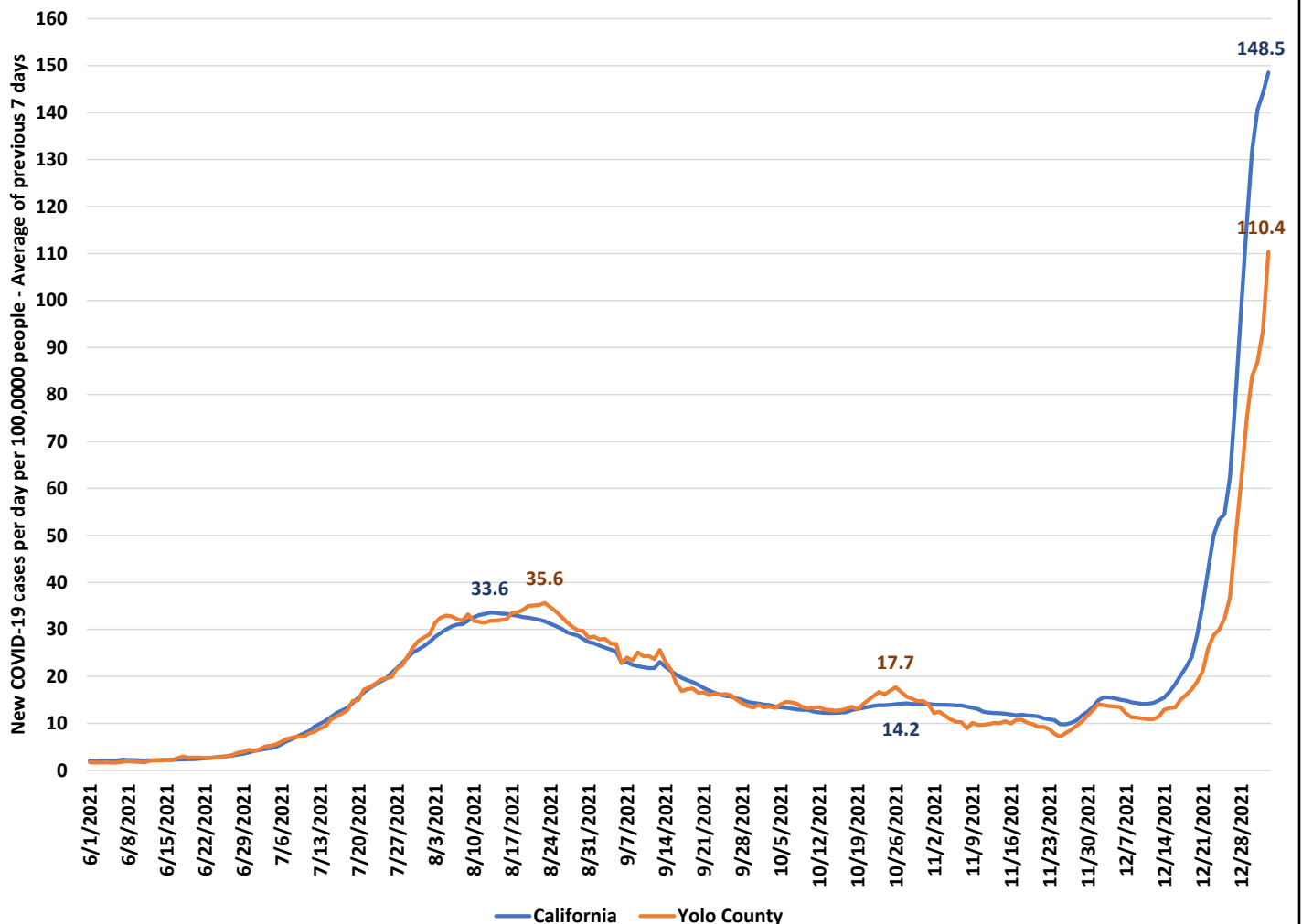
### Cases

Current unadjusted case rate (7 day average, 9 day lag): 110.4 new COVID-19 cases per 100,000 residents per day

Test positivity rate (7 day average, 9 day lag): Yolo County: 6.2%; Statewide: 21.3%

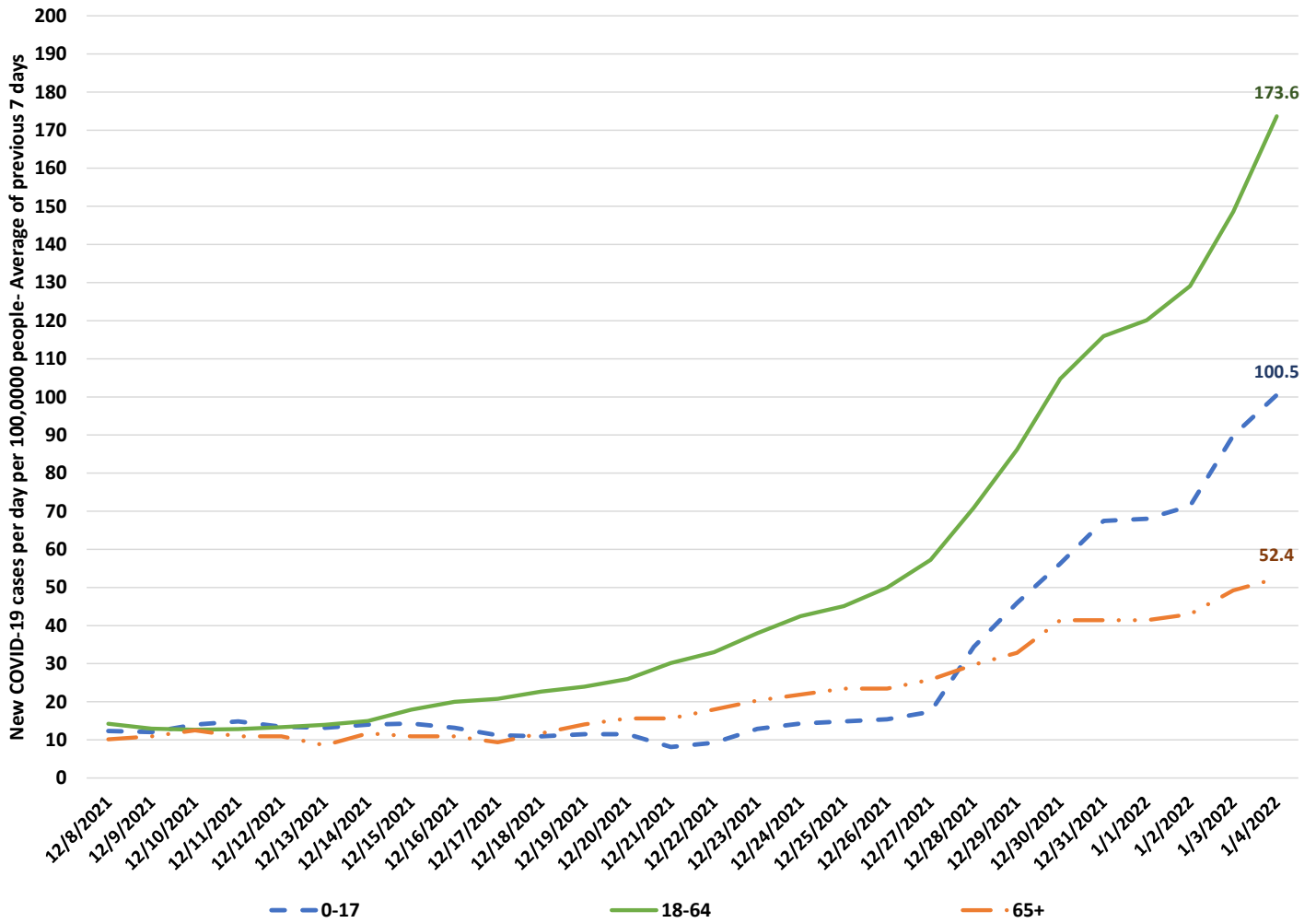
Trend: **199% increase** in overall case rate since 1/3 - **524% increase** since previous local high on 10/26. Case rates among all age group continue to rise.

**7-day Average New COVID-19 Cases Per Day Per 100,000 People - 9 day lag**

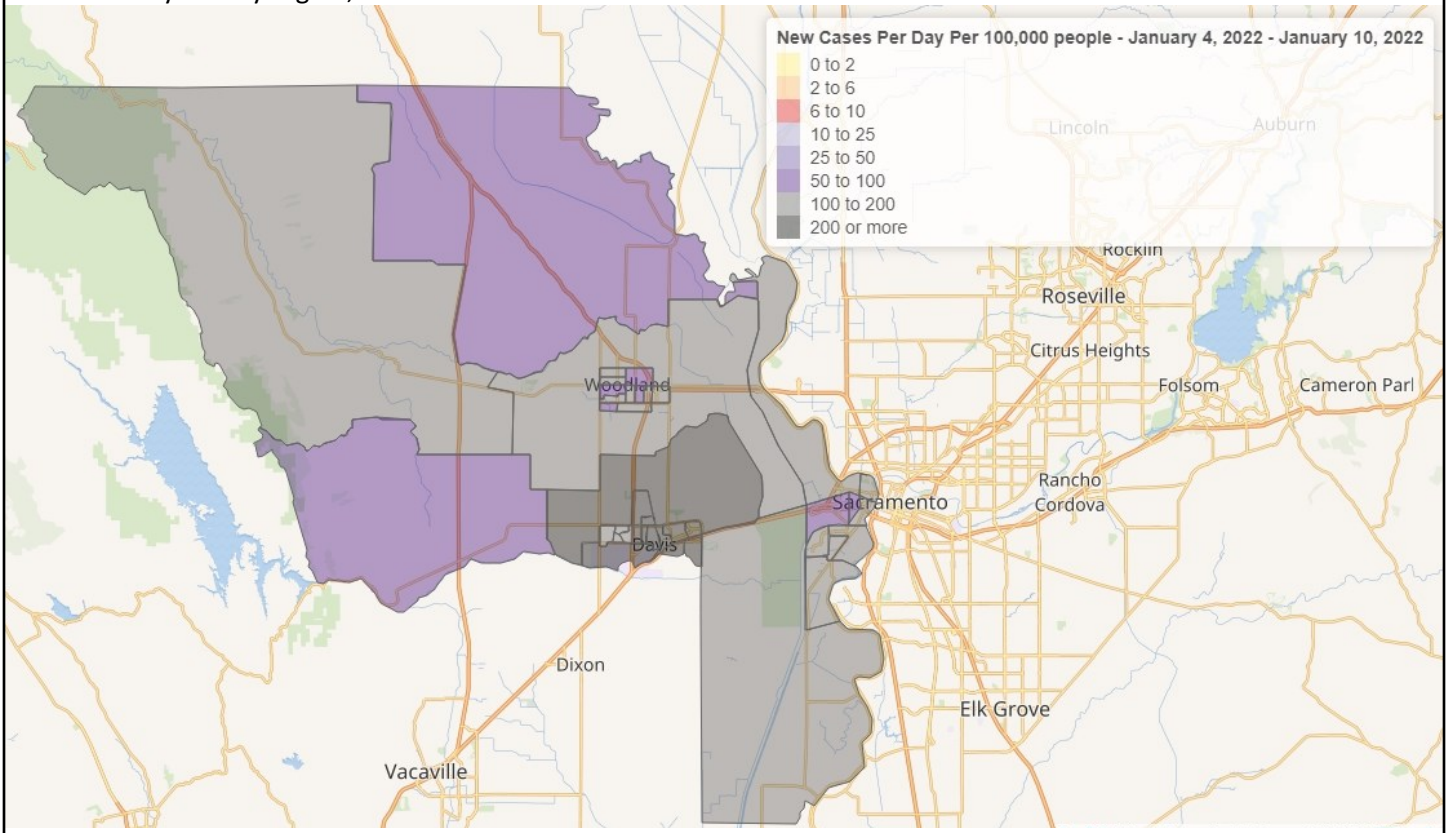


New case rate by age:

New Cases Per Day Per 100,000 with 7-day Lag, By Age Group - Last 28 days



New cases by county region, last week:



CDC community transmission level: **High** (110.4 new cases per 100,000 people per day)

Cases per 100,000 per day

1.4

7

14

110.4

Community Transmission Level

Low

Moderate

Substantial

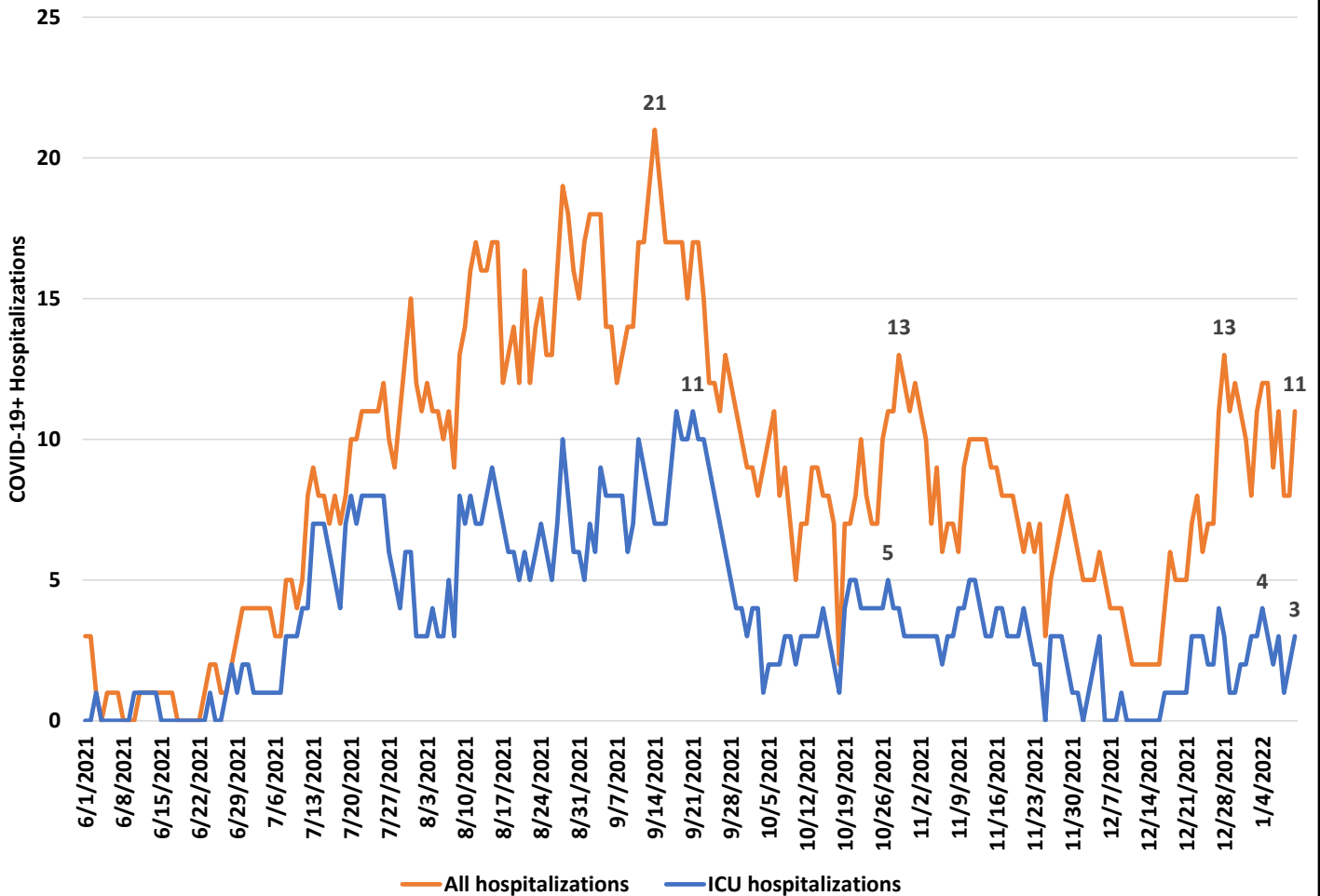
High

## Hospitalizations

Current COVID-19+ hospitalizations: **11** total, **3** in ICU

Trend over last week: Large day to day fluctuations, but now trending down from local high of 13 on 12/28/2021

COVID-19+ Hospitalizations at Yolo County Hospitals since June 1, 2021



Current breakthrough hospitalizations: **2/11** (18.2%)

Current bed availability: 2 ICU, 1 medical/surgical

## Deaths

Total confirmed COVID-19 deaths: 267 (1 still held up in processing and not on dashboard).

- New deaths confirmed this week: 0

### Demographics of Yolo County residents who died of COVID-19 since Jan 18,2021

	Unvaccinated residents		Partially vaccinated residents†		Fully vaccinated residents‡		All residents		
	N	%	N	%	N	%	N	%	
<b>Deaths</b>	72	69.2%	15	14.4%	17	16.3%	104	100.0%	
<b>Age</b>									
	<i>Mean</i>	68.8±15.2		68.7±15.2		70.5±15.2		69.1±15.1	
	<i>Minimum</i>	39		27		39		27	
	<i>Maximum</i>	99		85		95		99	
<b>Race/Ethnicity</b>									
	<i>American Indian or Alaska Native</i>	2	2.8%	1	6.7%	1	5.9%	4	3.8%
	<i>Asian</i>	5	6.9%	2	13.3%	1	5.9%	8	7.7%
	<i>Black or African American</i>	2	2.8%	1	6.7%	1	5.9%	4	3.8%
	<i>Hispanic or Latino</i>	28	38.9%	6	40.0%	3	17.6%	37	35.6%
	<i>Multiple Races</i>	1	1.4%	0	0.0%	0	0.0%	1	1.0%
	<i>Other</i>	1	1.4%	1	6.7%	0	0.0%	2	1.9%
	<i>White</i>	31	43.1%	4	26.7%	10	58.8%	45	43.3%
<b>City</b>									
	<i>Davis</i>	5	6.9%	0	0.0%	1	5.9%	6	5.8%
	<i>West Sacramento</i>	27	37.5%	9	60.0%	5	29.4%	41	39.4%
	<i>Winters</i>	6	8.3%	0	0.0%	1	5.9%	7	6.7%
	<i>Woodland</i>	28	38.9%	5	33.3%	9	52.9%	42	40.4%
	<i>Rest of the county</i>	6	8.3%	1	6.7%	1	5.9%	8	7.7%
<b>Community resident</b>									
		64	88.9%	11	73.3%	12	70.6%	87	83.7%
<b>LTCF resident</b>									
		7	9.7%	4	26.7%	5	29.4%	16	15.4%
<b>Vaccines received</b>									
	<i>Pfizer</i>	0	0.0%	6	40.0%	4	23.5%	10	9.6%
	<i>Moderna</i>	0	0.0%	3	20.0%	8	47.1%	11	10.6%
	<i>Janssen</i>	0	0.0%	1	6.7%	1	5.9%	2	1.9%

Notes:

†Incomplete vaccine series, or symptom onset or first COVID test was less than 14 days after last vaccine in the series

‡Symptom onset or first COVID test was more than 14 days after last vaccine in the series

## Vaccinations

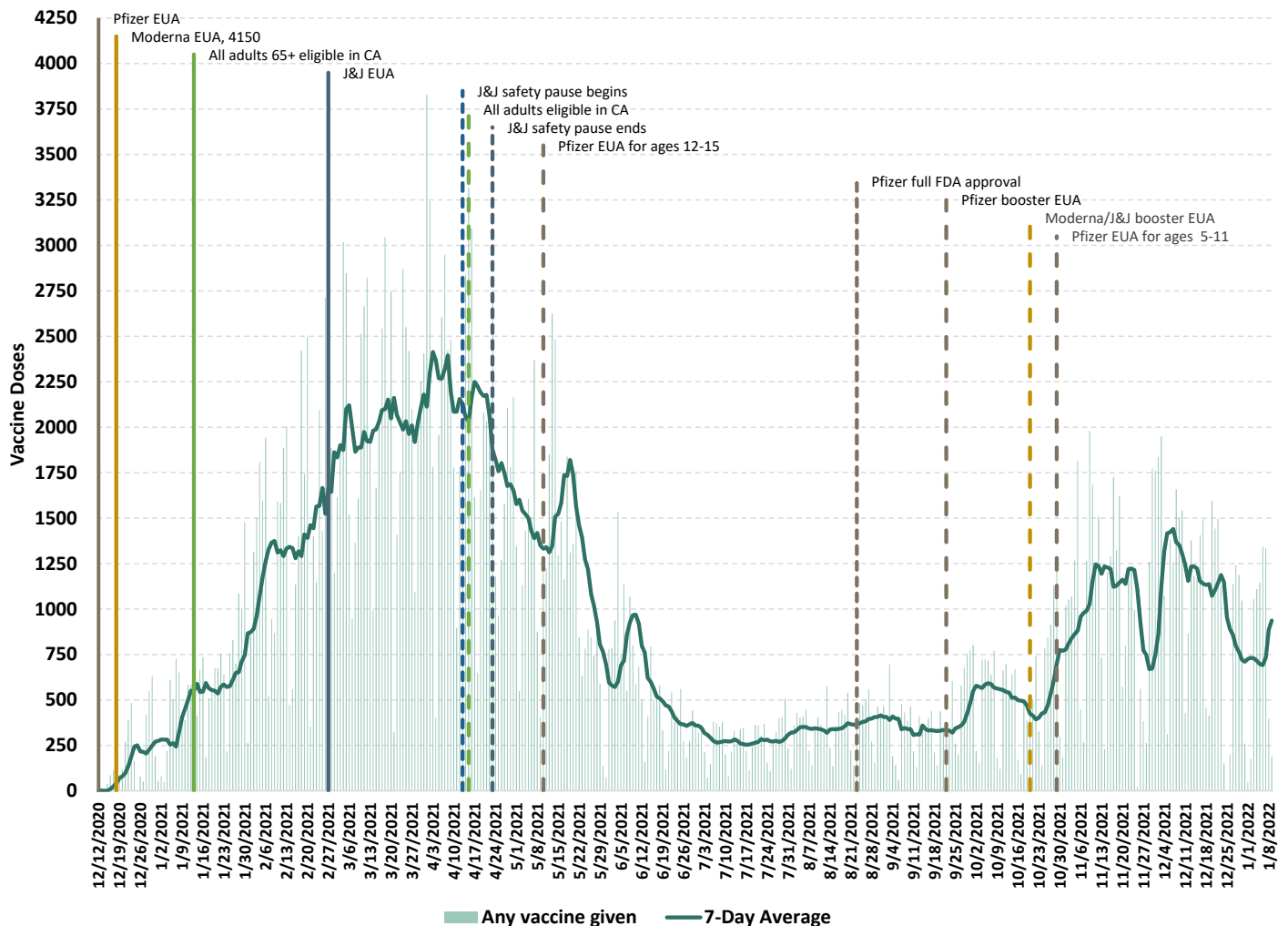
- Countywide, all ages: 66.0% fully vaccinated (↑0.4%), 71.5% with at least one dose (↑0.5%).
- Countywide, 5+: 69.5% fully vaccinated (↑0.5% due to rounding), 75.3% at least one dose (↑0.5%).
- School age kids (5-19) : 21,189 (41%) fully vaccinated, 24,516 (47%) with at least one dose, 2,470 (5%) with boosters.
- Seniors (65+): 27,814 (89%) fully vaccinated, 29,487 (94%) with at least one dose, 17,705 (57%) with boosters.
- 5516 COVID-19 vaccines were administered to Yolo County residents since the last vaccine status report:
  - ◇ 1043 residents got their first COVID-19 shot - 315 were ages 5-11
  - ◇ 846 residents got their second COVID-19 shot - 296 were ages 5-11
  - ◇ 3615 residents received a booster (1497 Moderna boosters, 1657 Pfizer boosters, 32 J&J boosters, 429 mixed boosters)

### Vaccinations by zip code, including weekly change:

Yolo County Residents Vaccinated by Zip Code* - Change from January 2 to January 9, 2022													
City	Zip Code†	HPI	Population‡	Newly vaccinated residents		Residents with at least one dose of COVID vaccine				Residents fully vaccinated (1 dose of J&J, 2 doses of Pfizer or Moderna)			
				Vaccinated last week€	Change since last report	Number of residents	↑ since last report	% of population	↑ since last report	Number of residents	↑ since last report	% of population	↑ since last report
West Sacramento	95605	Q1	15,005	63	↑5	8,604	74	57.3%	0.5%	7,803	75	52.0%	0.5%
	95691	Q3	38,291	205	↑48	27,897	208	72.9%	0.5%	25,901	205	67.6%	0.5%
	95798		n/a	1	0	144	1			135	0		
	95799		n/a	0	0	1	0			1	0		
	<b>Total†</b>		<b>53,128</b>	<b>269</b>	<b>↑53</b>	<b>36,705</b>	<b>284</b>	<b>69.1%</b>	<b>0.5%</b>	<b>33,883</b>	<b>281</b>	<b>63.8%</b>	<b>0.5%</b>
Davis	95616	Q3	52,840	308	↑86	37,064	168	70.1%	0.3%	34,431	87	65.2%	0.2%
	95617		n/a	5	↑3	779	6			746	10		
	95618	Q4	27,992	166	↑44	23,190	139	82.8%	0.5%	21,746	105	77.7%	0.4%
	<b>Total†</b>		<b>70,251</b>	<b>478</b>	<b>↑132</b>	<b>61,047</b>	<b>315</b>	<b>86.9%</b>	<b>0.4%</b>	<b>56,922</b>	<b>205</b>	<b>81.0%</b>	<b>0.3%</b>
Woodland	95695	Q2	38,154	210	↑88	27,829	214	72.9%	0.6%	25,633	209	67.2%	0.5%
	95776	Q3	27,063	154	↑28	21,734	158	80.3%	0.6%	20,012	164	73.9%	0.6%
	<b>Total†</b>		<b>60,470</b>	<b>367</b>	<b>↑118</b>	<b>49,579</b>	<b>383</b>	<b>82.0%</b>	<b>0.6%</b>	<b>45,644</b>	<b>382</b>	<b>75.5%</b>	<b>0.6%</b>
Winters	95694	Q3	8,810	67	↑24	6,907	80	78.4%	0.9%	6,164	58	70.0%	0.7%
Brooks	95606	Q1	256	0	↓1	181	1	70.7%	0.4%	157	2	61.3%	0.8%
Capay	95607	Q3	207	2	0	185	3	89.4%	1.4%	166	1	80.2%	0.5%
Clarksburg	95612	Q4	1,257	4	↑2	964	3	76.7%	0.2%	883	7	70.2%	0.6%
Dixon§	95620	Q3	n/a	0	0	5	0			4	0		
Dunnigan	95937	Q1	1,646	9	0	1,018	10	61.8%	0.6%	925	7	56.2%	0.4%
Esparto	95627	Q2	4,001	15	↑3	2,558	13	63.9%	0.3%	2,252	28	56.3%	0.7%
Guinda	95637	Q1	351	2	↑2	231	4	65.8%	1.1%	214	6	61.0%	1.7%
Knights Landing	95645	Q2	1,020	10	↑9	887	13	87.0%	1.3%	786	14	77.1%	1.4%
Madison	95653	Q1	581	3	0	422	3	72.6%	0.5%	377	1	64.9%	0.2%
Rumsey	95679	Q4	252	0	0	74	0	29.4%	0.0%	65	0	25.8%	0.0%
Yolo	95697	Q3	380	2	↓2	406	7	106.8%	1.8%	365	5	96.1%	1.3%
Zamora	95698	Q2	254	0	0	159	0	62.6%	0.0%	152	0	59.8%	0.0%
<b>Overall</b>	<b>Total</b>		<b>225,894</b>	<b>1,227</b>	<b>↑339</b>	<b>161,468</b>	<b>1111</b>	<b>71.5%</b>	<b>0.5%</b>	<b>149,091</b>	<b>991</b>	<b>66.0%</b>	<b>0.4%</b>

### Vaccine doses administered per day

Yolo County Residents Receiving Any COVID Vaccine Per Day - All Vaccine Types



**Outbreaks of interest**

**Other important updates**